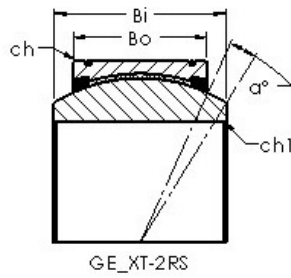
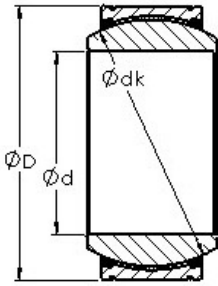




# AD Bearing Machine Co., Ltd



## AST GE200XT-2RS AST Bearing

Bearing No. GE200XT-2RS

Bore Diameter	200 mm
Outer Diameter	290 mm
Bearing Type - double fracture	sealed
Bore Dia (d)	200.0000
Outer Dia (D)	290.0000
Outer Width (Bo)	100.0000
Inner Width (Bi)	130.0000
Dynamic Load Rating (Cr)	3,750,000
Static Load Rating (Cor)	9,000,000
Max. shaft corner radius, or 45 deg. chamfer (ch1)	1.100
Max. housing corner radius, or 45 deg. chamfer (ch)	1.100
Spherical Diameter (dk or Dk)	250.000
Mis-alignment Angle (a deg.)	7
Weight (g)	28,400.00
Material	Inner ring and outer ring are made from 52100 chrome steel, or equivalent

GE200XT-2RS Bearing 2D drawings and 3D CAD models